



# Scientific and Technical Advisory Panel Report to the 46<sup>th</sup> Meeting of the GEF Council

**Rosina Bierbaum**  
Chair, GEF-STAP

# + Who is STAP?



Anand Patwardhan,  
Adaptation



Sandra Diaz,  
Biodiversity



Ralph Sims,  
CC Mitigation



Jakob Granit,  
International Waters



Rosina Bierbaum,  
Chair



Annette Cowie,  
Land Degradation



Henk Bouman, Ricardo Barra,  
Chemicals & Waste



Michael Stocking,  
Special Adviser



Tom Lovejoy,  
Special Adviser



# + Outline of the Report



- STAP Work Programme activities and products
- OPS-5 STAP Evaluation and self-reflection
- STAP's role in the GEF-6



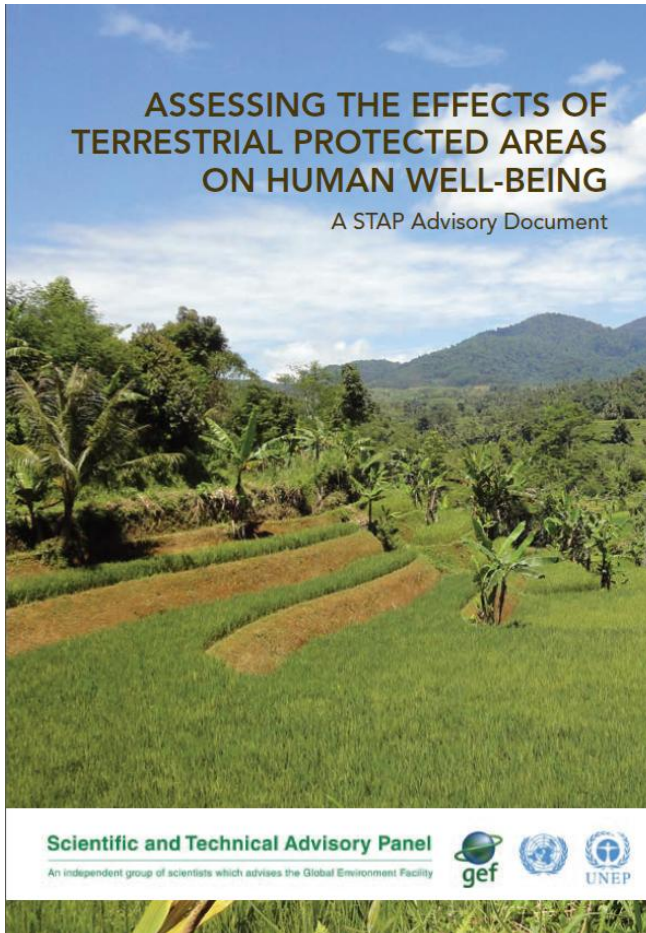
# **STAP Work Programme Activities and Products**

Scientific and Technical Advisory Panel  
of the Global Environment Facility





# Assessing the Effects of Terrestrial Protected Areas on Human Well-Being



- PAs can have positive, neutral, or even negative social effects

BUT...

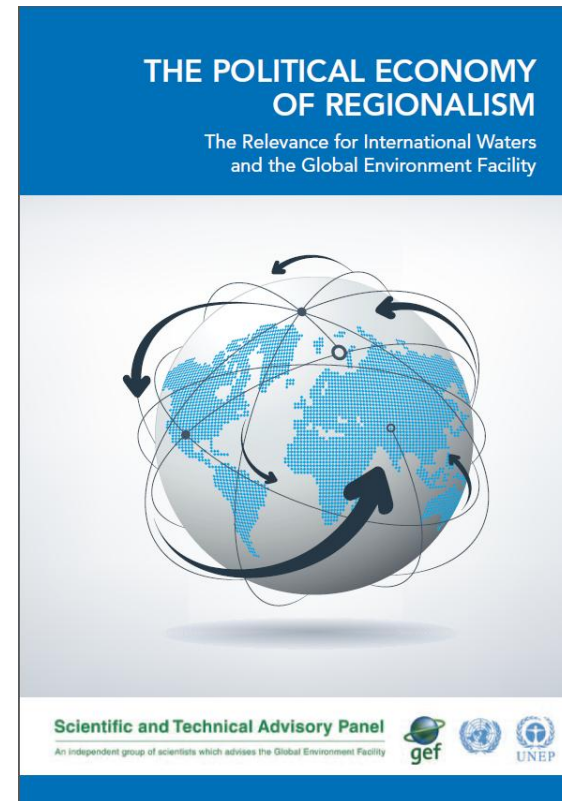
- The evidence base is insufficient to directly inform policy
- GEF projects can fill this gap . . .

# + Mainstreaming Biodiversity in Practice



# + The Political Economy of Regionalism

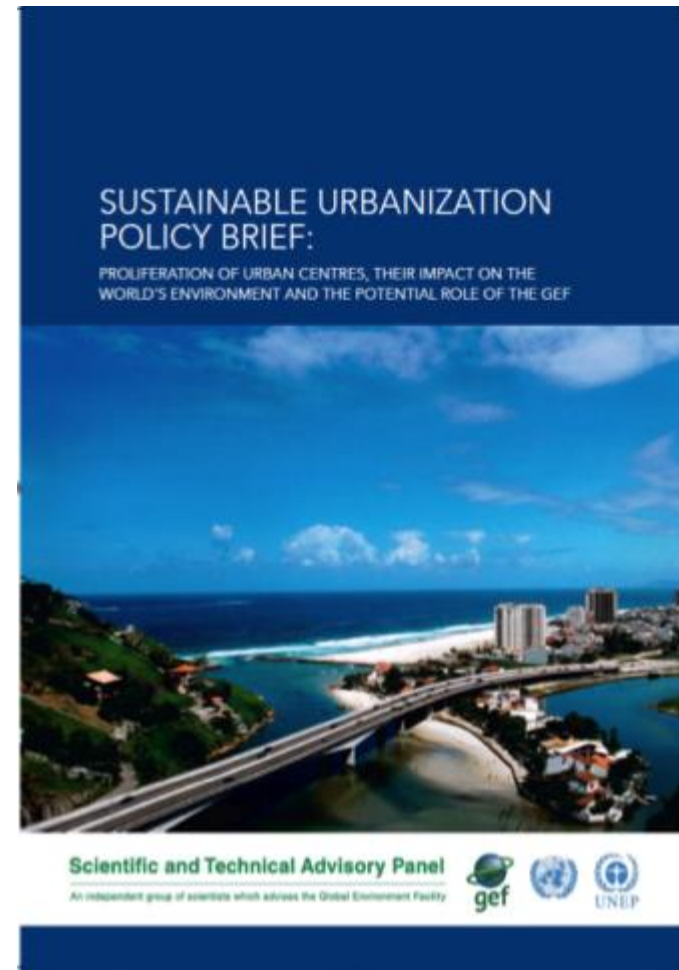
- When addressing transboundary water management systems, it is important to...
- Synchronize national and regional incentives
- Assess existing regional institutions and frameworks
- Consider social and economic contexts



# + Preliminary thinking on Sustainable Urbanization Opportunities

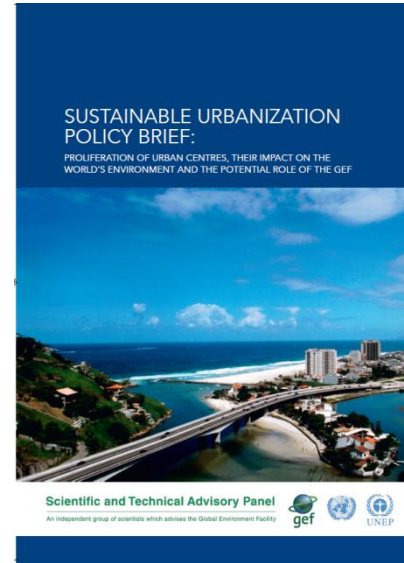
Provides preliminary thought to improve the implementation of the IAP:

- Refining its objectives and outcomes
- Applying SLM in an urban context
- Seeking opportunities within the City Life Cycle



# + Other Activities

- Roundtable discussion on mainstreaming adaptation
- GEF CEO Innovation Forum on Information Communication Technology (ICT)
- Marine Spatial Planning in Practice
- Improving understanding of mercury in the environment
- STAP retreat to develop Assembly Report



## Upcoming/Ongoing

- Black carbon
- Biofuels for climate change mitigation
- More on Sustainable urbanization
- The scientific basis for measuring, monitoring, and evaluating adaptation
- Agroecosystem resilience

# + OPS-5 STAP Evaluation and self-reflection

Scientific and Technical Advisory Panel  
of the Global Environment Facility



# + Key Findings of OPS-5's Evaluation of STAP

1. There are opportunities to improve the flow of knowledge to and from the STAP
2. How can science be enhanced in the GEF?
3. As demands increase, we need to prioritize



# + STAP's current role

- **Assist in the development of GEF strategies**
  - Panel members played an active role in the TAG's
- **Advise on cross-cutting thematic areas**
  - Products such as the STAP report to the GEF Assembly
- **Scope emerging global environmental issues**
  - Reports on topics such as marine debris
- **Strengthen scientific & technical basis of GEF programming**
  - Screening of PIF's, and on-going engagement through participation on the focal area task forces





## STAP's reflections on its role in the GEF

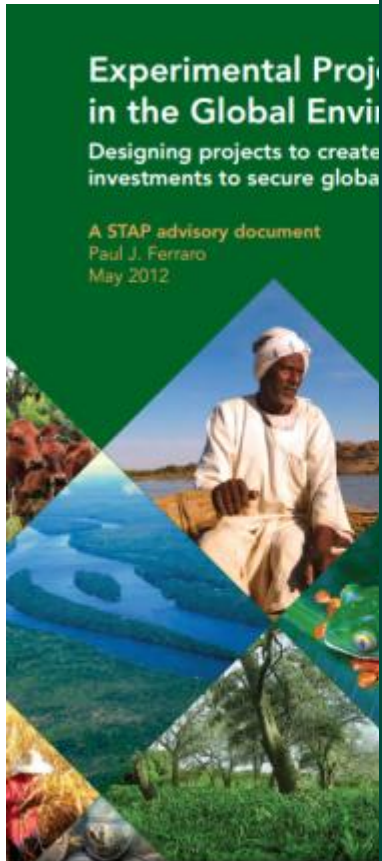


- For GEF-4 and GEF-5 the majority of STAP's programmatic activities addressed specific focal area requests
- STAP only occasionally tackled higher-level strategic issues facing the GEF partnership.
- Screening projects took the lion's share of STAP resources (both Secretariat and Panel members).

# + Examples of focal area specific work



# + Examples of higher-level strategic work

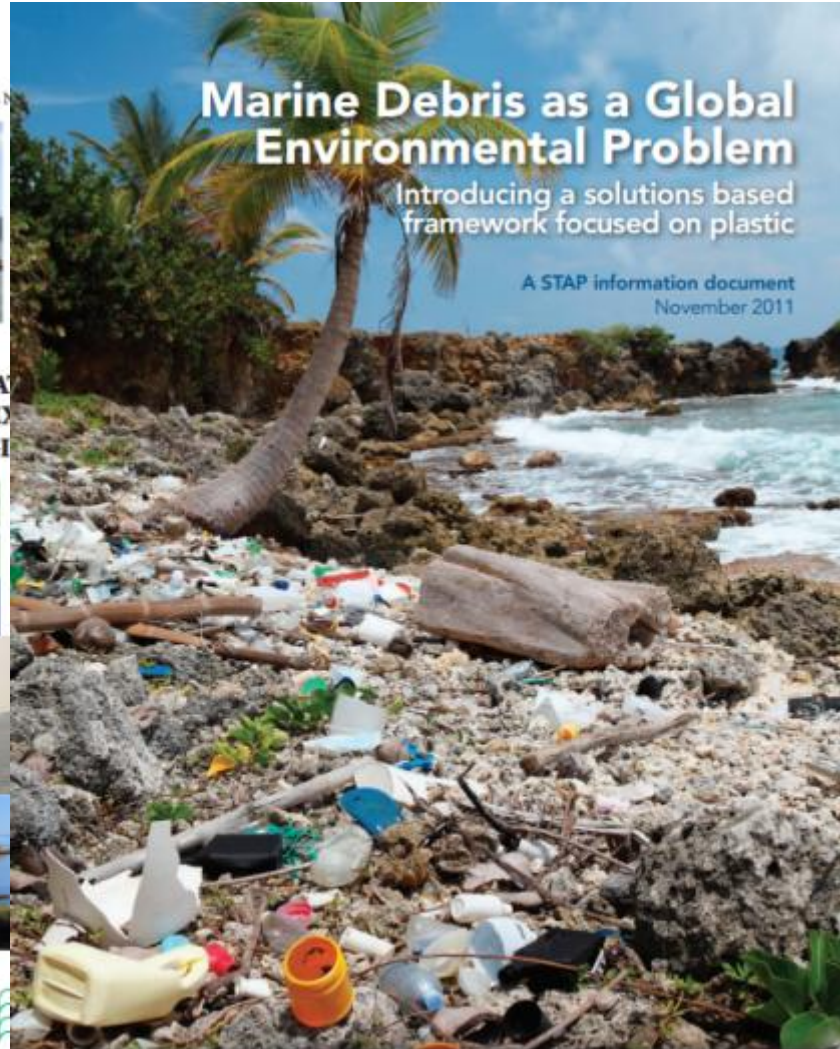
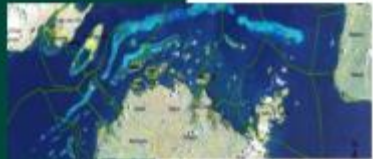


Secretariat of the  
Convention on  
Biological Diversity

CBD Technical Series



MARINE SPATIAL PLANNING  
IN THE CONTEXT OF  
BIODIVERSITY



Scientific and Technical Advisory Panel

An independent group of scientists which advises the Global Environment Facility





# STAP's Role in GEF-6

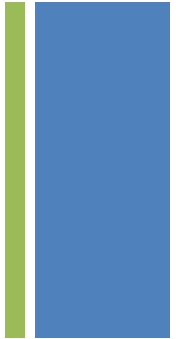
Scientific and Technical Advisory Panel  
of the Global Environment Facility







## Strengthening the efficiency and effectiveness of STAP's review in GEF-6



*Currently:* All full sized projects are reviewed by STAP.

*However:* Not all projects benefit equally from a STAP review.

*Therefore:* We are thinking about the possibility of a **selective review process.**



## We would need to have selection criteria – some possibilities for consideration....



- Novel intervention approaches/technologies
- New thematic area, strategic objective
- Integrated Approaches
- Complex, innovative & integrated projects – multiple focal area, multi-trust, or programmatic approaches





## **We would absolutely want the partners engaged in the selection process**



- GEF (Agencies and Secretariat) identify projects as the work program is assembled
- STAP identifies projects that are scientific/technically challenging and not identified by the GEF
- Council exercises its prerogative to identify projects

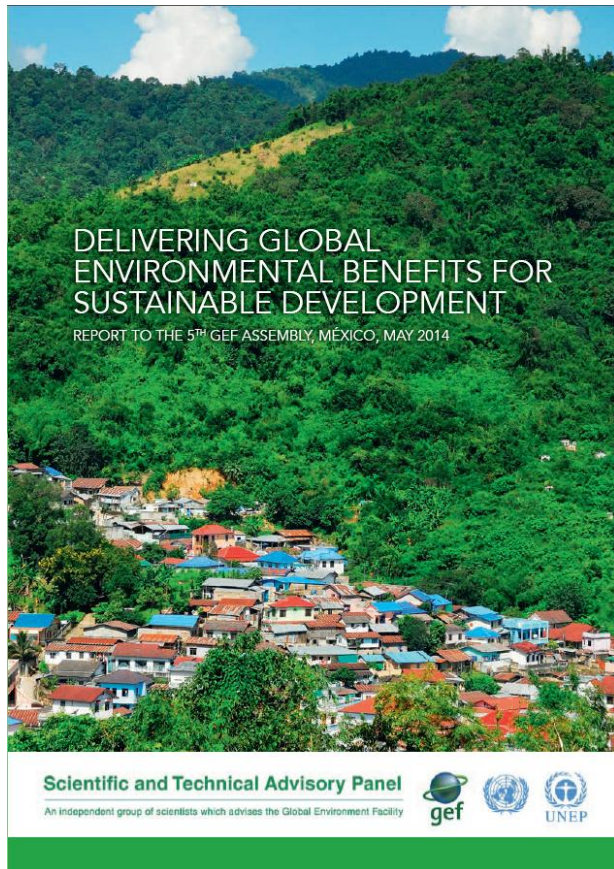


## Next step:

Establish a working group to think about selection criteria and process for presentation at the next Council Meeting in November



# The STAP Report to the GEF Assembly



- Environmental degradation must be tackled in a more integrated and holistic way
- Sustainable development should be at the core of GEF interventions
- The GEF should continue to be **catalytic and innovative** while seeking to effect **permanent and transformational** change

# + Manage information and knowledge

- Experimental design
- Targeted research
- Systematic scientific reviews
- Efficiency of resource use

FOR EXAMPLE:  
We don't know if  
Protected Areas  
enhance livelihoods



# + Integrated approaches

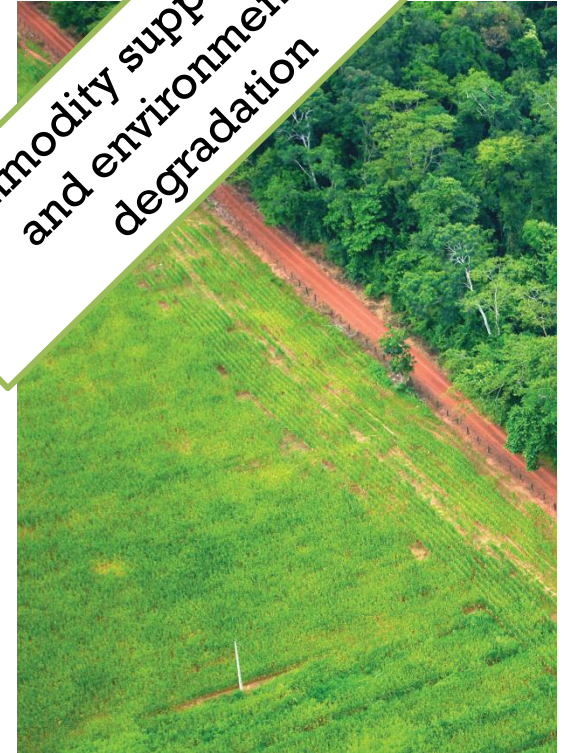
Sustainable cities



Food security in Sub-Saharan Africa



Commodity supply chains and environmental degradation



# + Perhaps some future IAPs? Climate resilience

- As risk management
- As a co-benefit
- Integrated into a Multiple Benefits framework



# + STAP can help: Sustainable cities

STAP panel members have strong science networks.

STAP could:

- review work undertaken to date (APEC low-carbon model towns; ICLEI; Covenant of Mayors; C 40; etc);
- provide case studies of current sustainable city activities to illustrate what might be feasible;
- provide key indicators that will enable a city to monitor a more sustainable growth pathway
- with regard to water supply and consumption, waste treatment, air quality, sustainable energy systems, urban design, freight and passenger transport options, land management, chemical use, biodiversity, etc.
- An excellent model for a case study could be the Development Index System produced by Yujiapu Financial District.

# + Possible indicators for assessing Sustainable Cities.....



- Carbon emissions/person in buildings
- Low-carbon transport share of total journeys
- Renewable energy shares of heat and power supply
- Ratio of accredited “green buildings”
- Green technology procurement by public utilities
- Outdoor air quality (PM 2.5, SO<sub>2</sub>, NO<sub>x</sub> levels)
- Carbon emission intensity / GDP
- Green space out of total land area
- Daily water consumption/person
- Waste treatment system efficiency
- Underground space utilisation



# Agro-ecosystem resilience

Relevant to:

- Climate change adaptation
- Biodiversity conservation
- Managing land degradation
- Food security
- Sustaining livelihoods of the rural poor

Relevant at many scales:

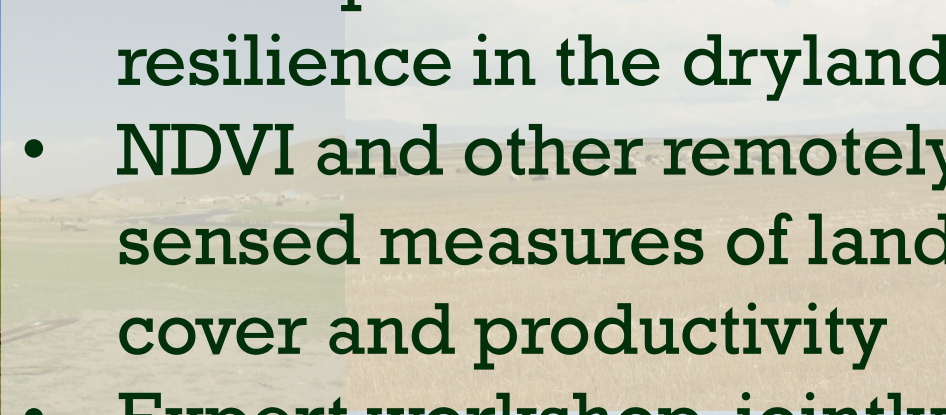
- GEF project
- GEF program (LD RBM, Food Security IAP)
- National (Conventions, SDGs)



# Sustainable, resilient agro-ecosystems

Process to identify indicators:

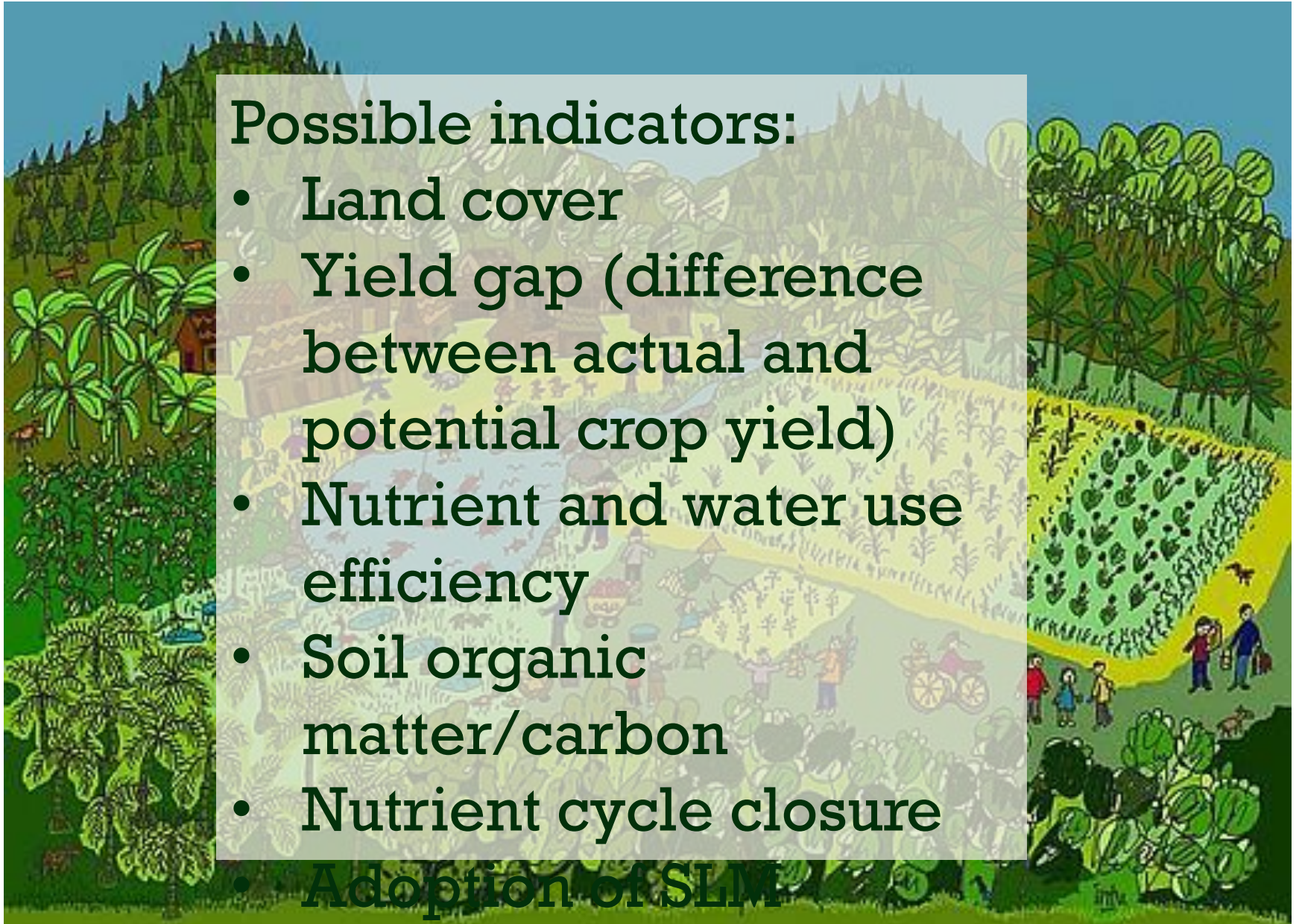
- Background papers
- Conceptual basis for resilience in the drylands
- NDVI and other remotely-sensed measures of land cover and productivity
- Expert workshop, jointly convened with UNCCD

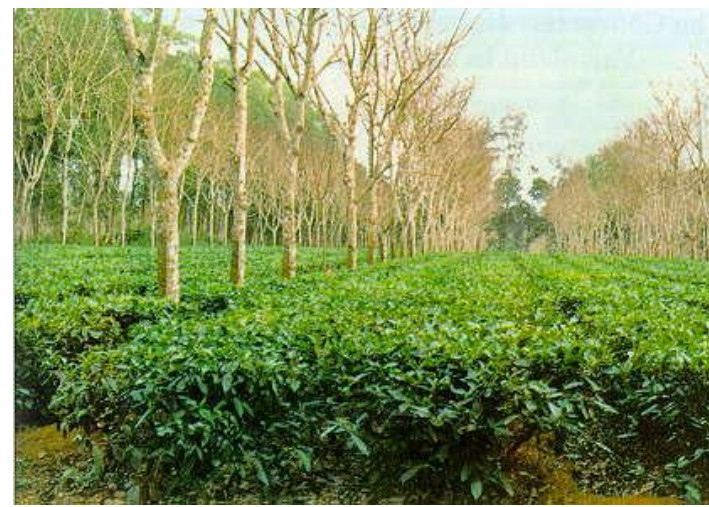


# Sustainable, resilient agro-ecosystems

## Possible indicators:

- Land cover
- Yield gap (difference between actual and potential crop yield)
- Nutrient and water use efficiency
- Soil organic matter/carbon
- Nutrient cycle closure
- Adoption of SLM









# Questions and comments welcomed



Rosina Bierbaum

Chair

GEF's Scientific and Technical Advisory Panel

[www.stapGEF.org](http://www.stapGEF.org)